

Colby Pharmaceutical Company

developing breakthrough therapeutic
drugs for prostate inflammation & cancer

**Investor Presentation
March 2008**

Corporate Overview

- Office/Lab/Operation in Menlo Park/Mt View/Madison
- Wisconsin Alumni Research Foundation (WARF) spin-out with OSM-ChemGeno drug platform technology
 - 3 exclusive WARF licenses
 - potential equity investor in later financing
- Data from \$15M in Grants
 - NCI RAPID Grants
 - Prostate Cancer Foundation
 - DOD Army PCRP Grant
 - NIH NCI SBIR Grant for pipeline drugs



Business Strategy & Investment Opportunity

Business Strategy

- Human proof of concept for new class of OSM drugs for effective treatment of prostate disease
- 2008 Series A funds Ph I/IIa safety & anecdotal efficacy
- Phase I/IIa data in two drugs drives financing & Ph IIb trial
- Phase IIb data drives partnering/exit within 2 to 4 years

Investment Opportunity

- Current PCa & BPH drugs not effective
- Enter clinic with lead OSM™ drug in months
- Funded lead & co-lead drug IND data & pipeline drugs with grants



\$6.5B Prostate Cancer Drug Market

US men/yr	Current Treatments	US \$B/yr	Current Clinical Problems	Potential New Drug Solutions
Prostate Cancer: pre-Surgery, pre-ADT & pre-Metastasis detection by radiographic scanning				
234,000	PCa Surgery or Radio-therapy	\$8.0B	15% fail Radiation or Surgery PCa therapy	no drug alternative enabled
35,000	ADT: Zoladex® or Luprolide® &/or Casodex®	\$2.5B	85% fail ADT therapy & have undesirable drug side effects	CPC-200 co-lead pre-ADT Rx
27,000	no approved drug PCa watchful wait	\$2.0B	rising PSA but no detectable mets	CPC-100 lead post-ADT Rx
Hormone Refractory Prostate Cancer: post-ADT& post-Metastasis detection by radiographic scanning-				
27,000	PCa Chemo: Taxotere® 1 st line, no 2 nd line	\$1.0B	toxic, 100% fail & progress to metastatic HRPC	CPC-300 pipeline pre-Chemo Rx
27,000	no approved drug PCa palliative care	\$1.0B	bone and soft tissue advanced metastasis & death in < 1 year	CPC-410 pipe-line post-Chemo Rx

\$4.5B Benign Prostatic Hypertrophy Drug Market

**US
men/yr**

**Current
Treatments**

**US
\$B/yr**

**Current
Clinical Problems**

**Potential New
Drug Solutions**

Benign Prostatic Hyperplasia: pre-5 α Reductase, pre- α 1Adrenergic Receptor blocker & pre-Surgery

8,000,000 +

**BPH:Proscar[®],
Avodart[®] or
Flowmax[®]**

\$9.5B

**drug needed to
reduce prostate
inflammation >30%**

**need new drug other
than 5 α Reductase &
 α 1Adrenergic
Receptor blocker drug
pre-BPH Surgery**



Management Team

David Zarling
PhD MBA

Co-Founder,
CEO & Director

Pangene, SRI International
Pharmaceutical Drug
Development

Hirak Basu
PhD

Co-Founder,
Chief Scientific
Officer

Slil Biomedical, UWCCC,
UCSF Pharmaceutical
Chemistry

Mitchell Finer
PhD

Chief Operating
Officer

Intracell, Genteric/Aventis,
Cell Genesys, Abgenix

Minesh Mehta
MD

Chief Medical
Officer

TomoTherapy,
UWCCC

Ken Narducy
PhD MBA

Director, Drug
Development

St Charles Pharma,
Centaur, Occulex,
Cooper, Schering-
Plough, Abbott

Anne Vallerga
MA PhD

Co-Founder, VP
Grants/Contracts
& Director

Stanford Medical
IRB Manager



Scientific Advisory Board

George Wilding MD

SAB Co-Chairman, prostate expert
Director UWCCC

Richard Zare PhD

SAB Co-Chairman, chemistry expert,
Chair Stanford co-founding SAB -
Chemistry Dept. multiple corporations

Hasan Mukhtar PhD

SAB Member, natural product anti-
UWCCC Cancer drug expert

Balaraman Kalyanaraman PhD

SAB Member, free radical & spin-
Free Radical Res. trap drug expert
Center, Medical
College of WI

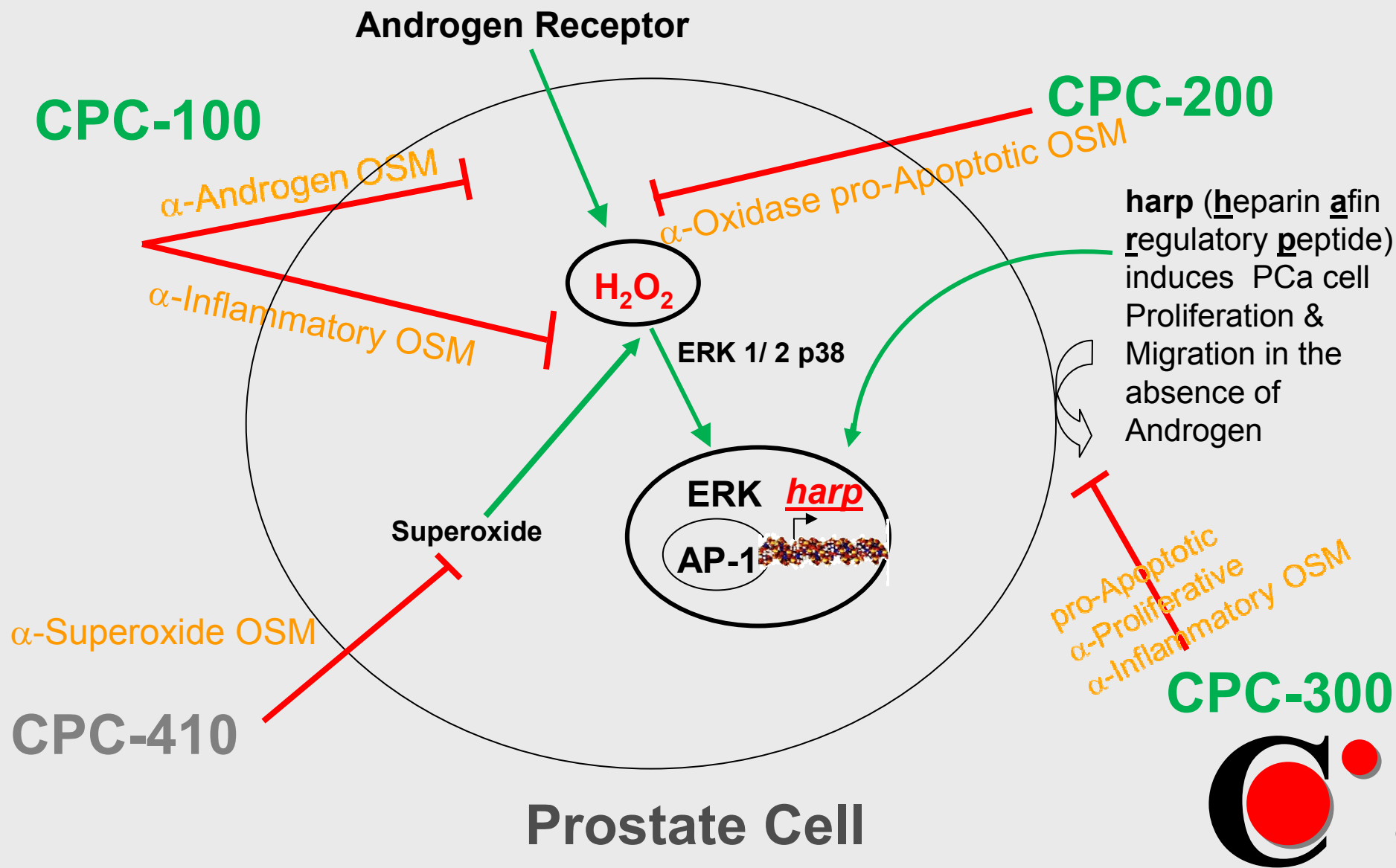


OSM™ Drugs For PCa

- Portfolio of 4 drugs targeting multiple stages of PCa
- Initial focus on CPC-100 lead & CPC-200 co-lead
- Lead drugs for recurrent progressive PCa
 - CPC-100 for post-ADT PCa
 - CPC-200 for pre-ADT PCa
- Pipeline drugs for post-ADT metastatic PCa
 - CPC-300 for pre-Chemo PCa
 - CPC-410 for post-Chemo PCa



Colby Compounds Have Different Prostate-specific Therapeutic Targets & MOAs

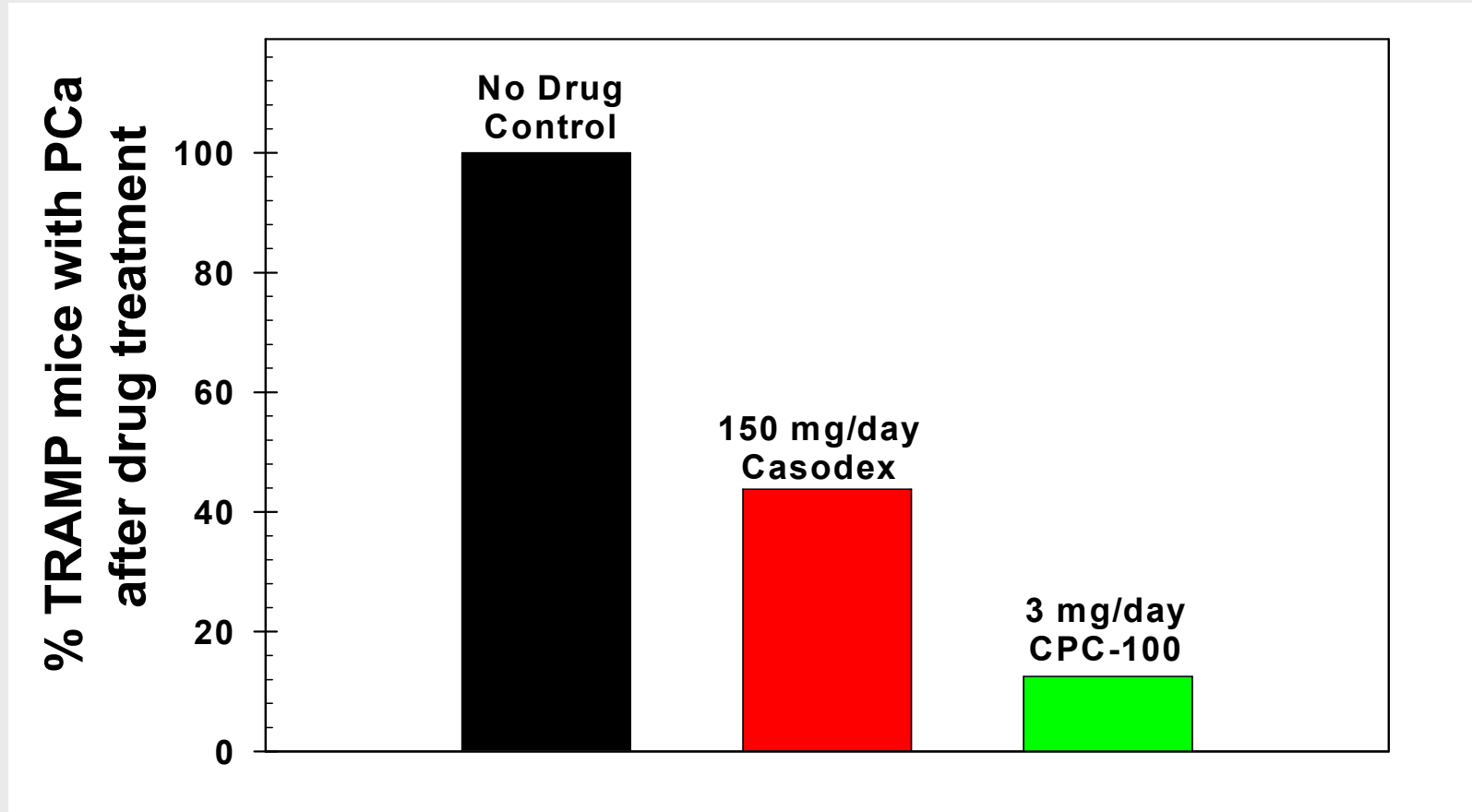


CPC-100 IND-Enabling Data

- Commercial synthesis optimized/standardized
- Pharmaceutical grade GMP lots completed
- Drug stability data completed
- Analytical method data completed
- GLP genotoxicity battery data completed
- GLP rat toxicology data completed
- *GLP dog toxicology work ongoing*



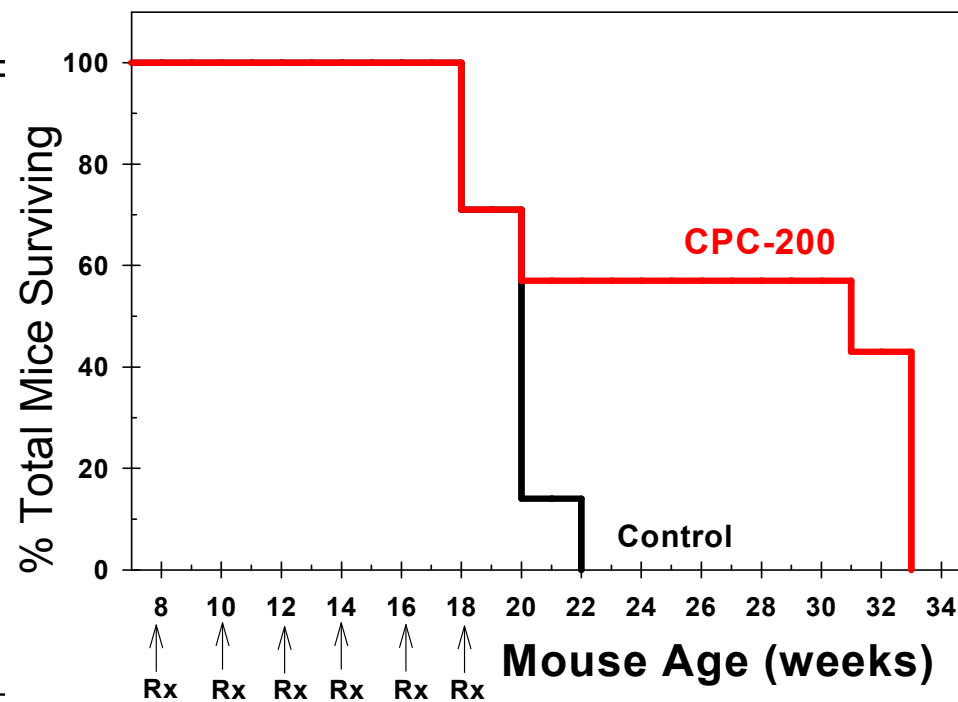
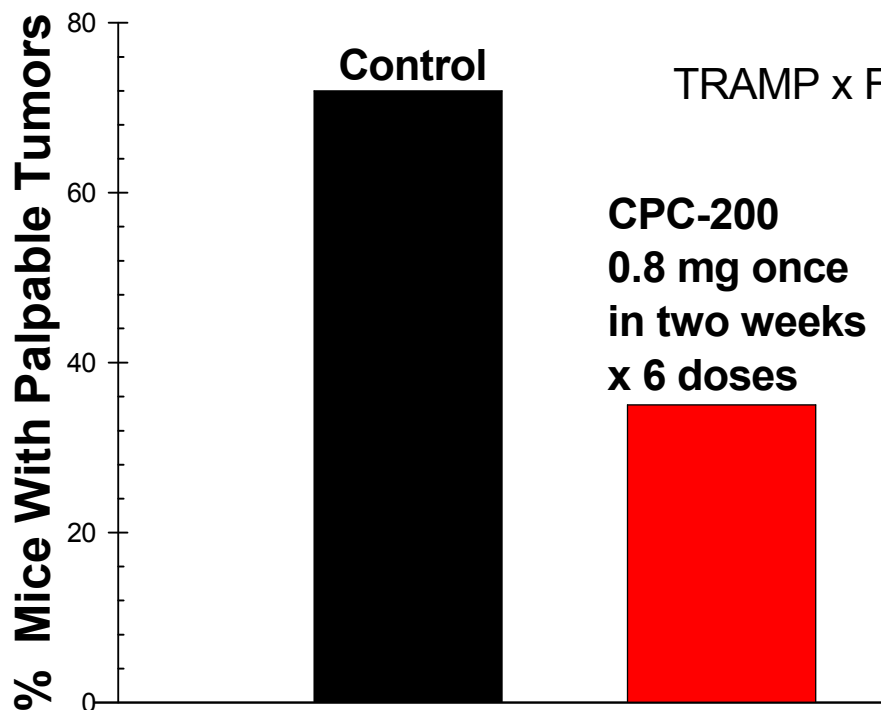
CPC-100 225x > Casodex® SOC



- CPC-100 more effective than Casodex® SOC in PSA stabilization
- CPC-100 absence of negative side effects
- CPC-100 active against Androgen-independent PCa, but Casodex® inactive



CPC-200 Extends Survival



Tumors palpated in live mice & confirmed by pathologist in 15 animals at 20 weeks

significant, ($p < 0.05$) survival benefit of 5.2 weeks, in 4 repeat experiments, using a total of 34 mice in each arm

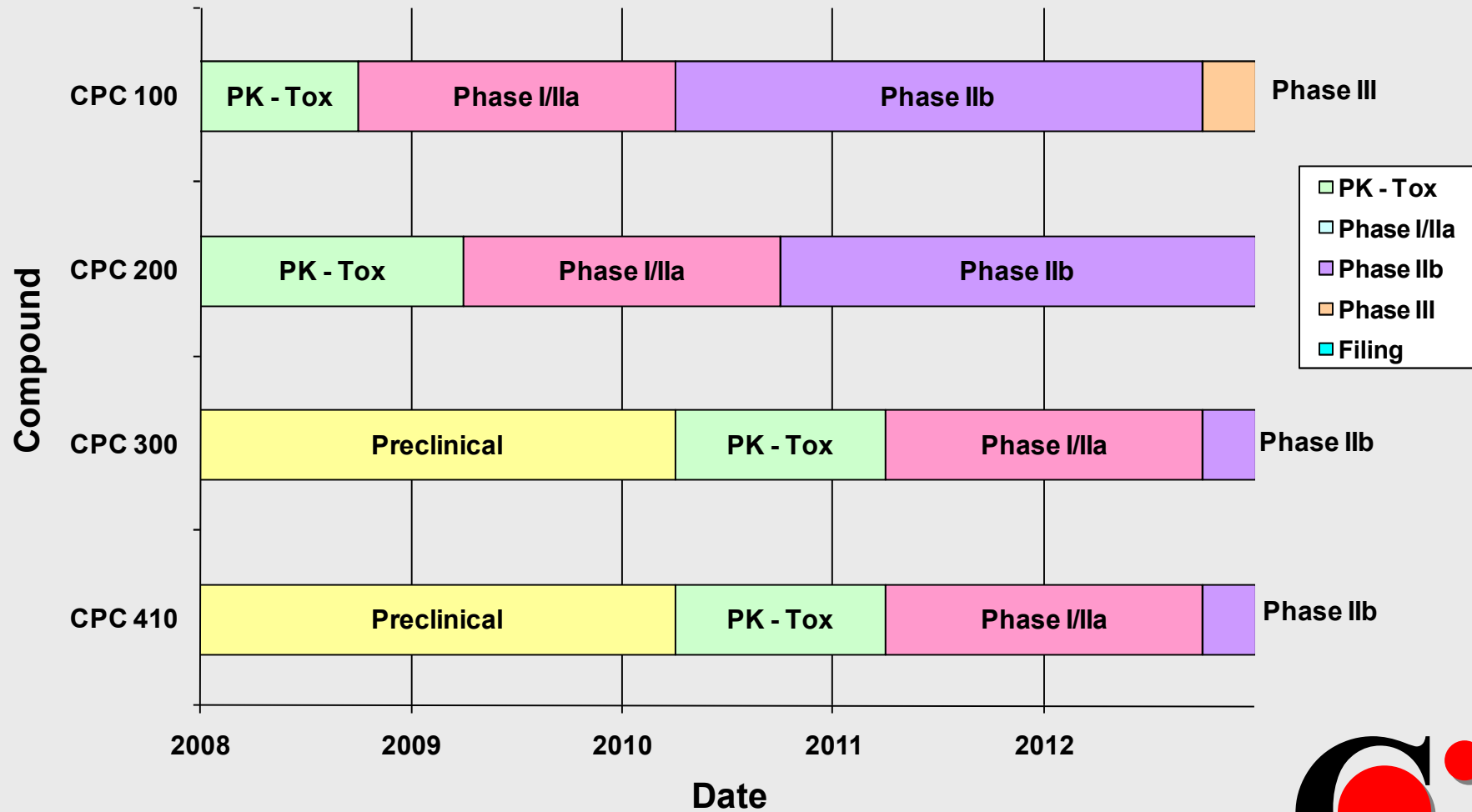


IP & Licensing

- Exclusive licenses under favorable terms from WARF
- Colby NCEs: CPC-410 & analogs of 100, 200 & 300
- Use, formulation, composition & manufacture claims
- Patentability & freedom to operate opinions
- Chemical scaffolds protected by broad claims
- NCEs with broad uses



Colby Development Pipeline



Colby Summary

- CPC-100 IND & clinical trial in 2008
- CPC-200 IND & clinical trial in 2009
- Strong IP portfolio
- Experienced management & clinical teams
- Pipeline supported by grants

